

Workflow unlimited.

**The DICOM module
from Carl Zeiss.**



We make it visible.



New horizons. With DICOM Visible Light.

In modern hospitals, the IT network plays a key role in the management of patient data. Here, DICOM (Digital Imaging and Communication in Medicine) has already become firmly established as the standard technique for the electronic transmission and archiving of image data.

With DICOM Visible Light, intraoperative images - regardless of whether they have been captured with a microscope or endoscope - can be centrally archived on a DICOM server e.g. a PACS (Picture Archiving and Communication System). This way, the image data can be accessed at any DICOM workstation.

DICOM Visible Light marks an important milestone on the road to achieving an optimal hospital workflow.

Everything simply flows.

The complete electronic patient file is becoming reality - all thanks to the continuous development of the DICOM standard. It combines the demographic patient data with all kinds of diagnostic images and is now including intraoperatively generated images.

The result: Everything flows in and out of one file. Now, intraoperative images can be centrally saved and accessed from DICOM compatible systems. All information is available whenever it is needed.

Managing data transfer in no time.

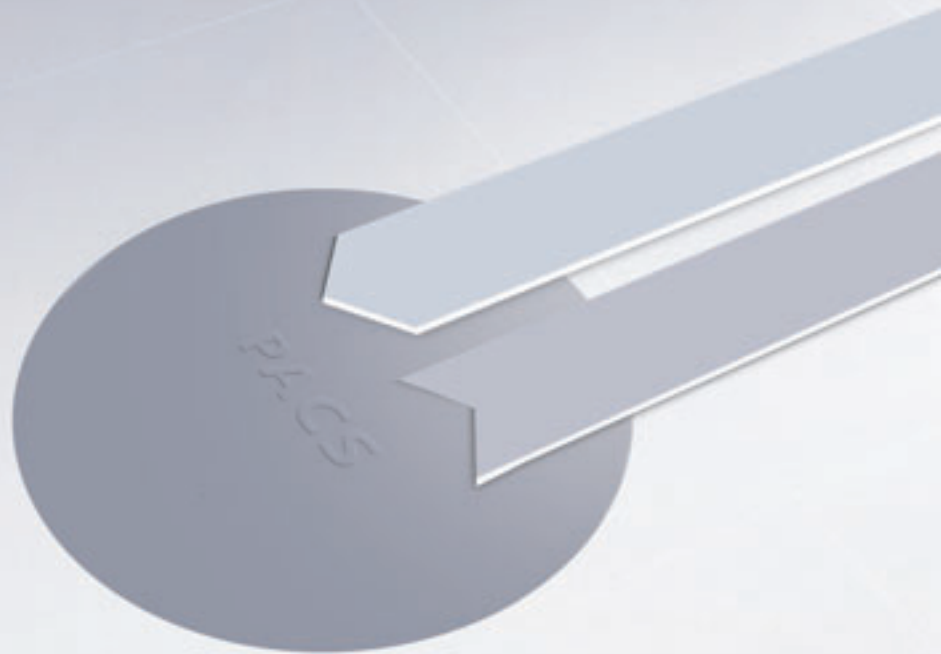
With the two ZEISS systems OPMI® Pentero® and MediLive® MindStream, demographic patient and image data can now be transferred from the PACS directly to the OR – all at lightning speed.* And it works the other way around, too: intraoperative images can be saved in the DICOM format and archived on the PACS. During and after surgery.

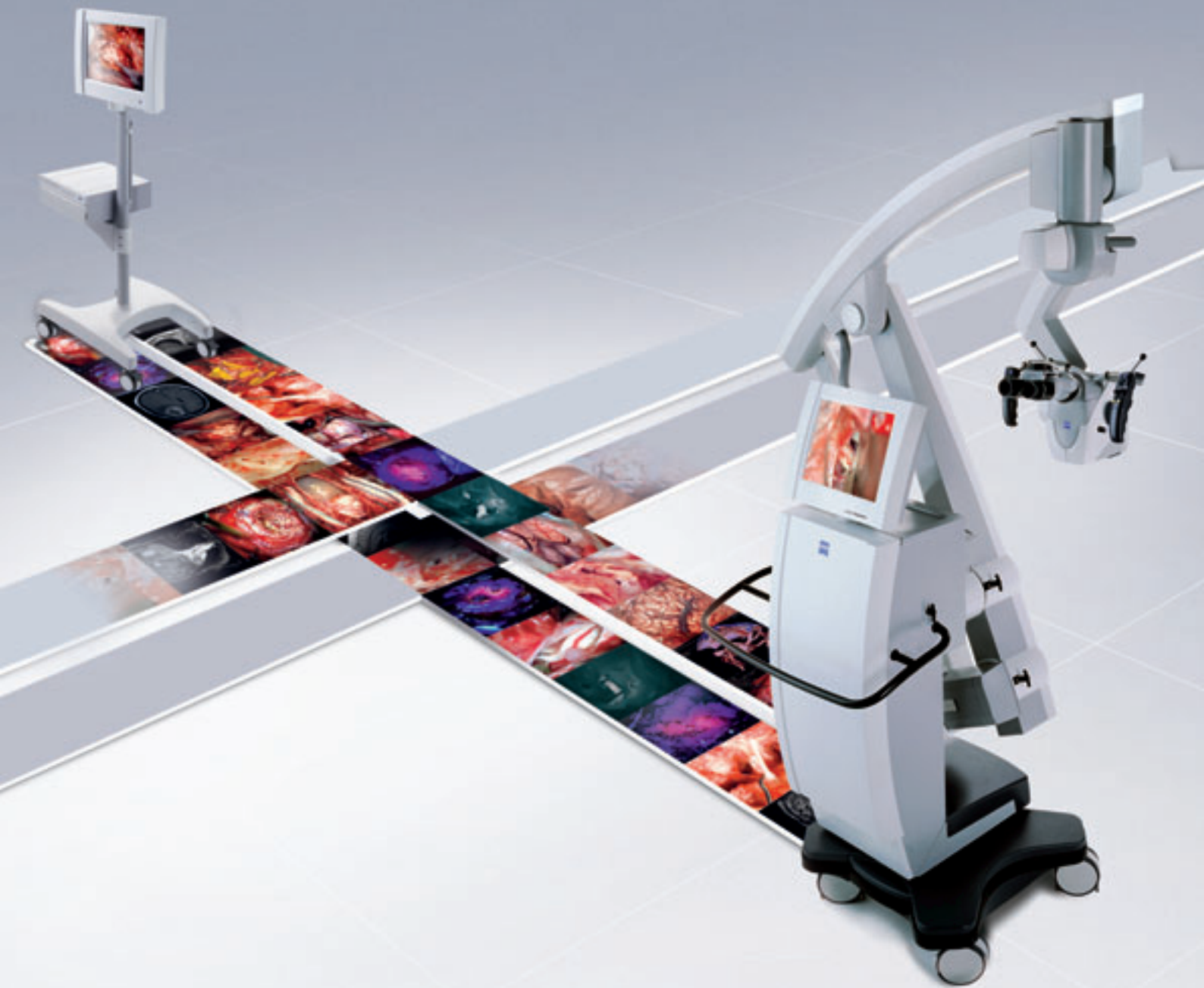
Clear patient allocation.

The images are directly linked to the demographic patient data. This allows a clear allocation of the image data to the patient. Not only in the network but even when stored on a CD, DVD or USB memory device e.g. for review in another hospital or doctor's office. OPMI Pentero and MediLive MindStream feature the required interfaces and storage capabilities.

Everything is faster, yet everything stays as it is.

The DICOM module from Carl Zeiss greatly extends the functionality of OPMI Pentero and MediLive MindStream. The networking capability is already built in. So saving time is only an upgrade away. The DICOM module from Carl Zeiss is easy to operate because it is completely integrated into the user interface. Archiving images into the PACS is as easy as burning them on CD or DVD. And all as intuitive as ever!





Any time. Any place.

Before surgery: fast setup.

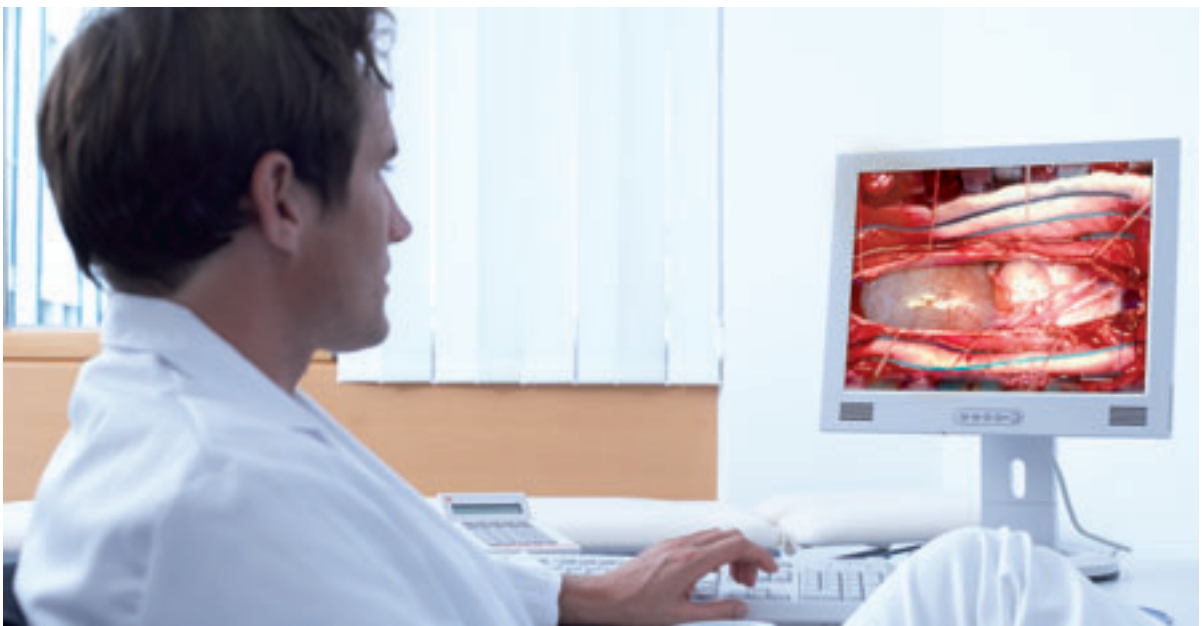
Saving valuable preparation time instead of retyping patient data before surgery. Today's solution, made possible by the DICOM module, is to send patient information with the modality worklist from the RIS (Radiology Information System) directly to the system. Or use the search mask to look for and select the patient data on the server. At the push of a button, the information is then loaded on OPMI Pentero or MediLive MindStream and automatically saved to the patient directory.

During surgery: superb ease of use.

The intraoperatively generated images can be saved and directly archived in the PACS during surgery. After capture and selection, the images are transferred to the PACS via the network – all at the push of a button. Direct linking of the image data with the demographic and other diagnostic data greatly simplifies the data management and reduces extra work of correct allocation of different media types.

After surgery: flexible access.

Forget about those time-consuming searches in duplicate archives or card index files. The intraoperative images can now be accessed at any time from the PACS. From any DICOM workstation. At any time. This allows you to incorporate images in presentations or lectures in next to no time and provides an excellent basis for discussing cases with colleagues.



Standards and Compliance

DIN EN ISO 9001

DIN EN ISO 13485

Information about the compatibility is contained in the DICOM Conformance Statement which you can obtain from your local contact or at www.zeiss.com/video.

* The image displays form OPMI Pentero and MediLive MindStream are not suitable for medical diagnosis. This applies in particular to the evaluation of CT or MRI data.

Carl Zeiss Surgical GmbH
73446 Oberkochen
Germany

Fax: +49 73 64 20-48 23
E-mail: surgical@zeiss.de
www.zeiss.com/video

OPMI, MediLive and Pentero are registered trademarks of Carl Zeiss.