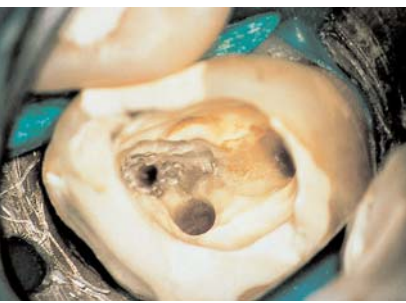


**Show your skills**

**The Video Camera for Dental Offices  
MediLive® Trio Dent™**



We make it visible.



Dr. Gänsler, Dietenheim, Germany



Dr. Burkhardt, Zurich, Switzerland



## Show your skills

Dr. Gänsler, Dietenheim, Germany

**MediLive® Trio Dent™ was designed from the ground up to meet the requirements of dental offices. The result is a high-quality 3-chip video camera for your ZEISS dental microscope that provides highly detailed, high-contrast video images to optimally support you in patient communication or when giving a presentation to colleagues.**

### Optimum patient communication

MediLive Trio Dent™ gives you the opportunity to present the diagnosis, treatment results and your skills to your patients step by step. The Freeze function, which can be easily activated via the foot switch, enables you to create still shots of important treatment stages which you can display on the video monitor. The video image can also be rotated 180 degrees using the Image Orientation function, making it possible for patients to see their teeth on the monitor in the correct position. The live images also allow your assistants to work with more foresight.

### Bright, true-color images

MediLive Trio Dent™ was specially developed to record procedures in dental offices. The high light sensitivity and color resolution ensure that brilliant images are taken even under difficult lighting conditions. Thus, deep and narrow root canals are also displayed on the monitor as true-color, high-contrast images. Furthermore, Trio Dent™ displays large differences in brightness or color in the oral cavity – e.g. on teeth and gingiva – as you are accustomed to seeing through the microscope. The progressive scan camera head minimizes blur resulting from movements by the patient or camera, thus ensuring that you always have high-quality images.

### Configured at the push of a button

The MediLive® Trio Dent™ video camera is always at the ready. Simply call up the pre-set, user-specific configuration via the control menu. If these settings are further adjusted, they can be easily stored and accessed at any time. The various adjustments to the camera for Superlux® 180 halogen and xenon illumination can also be saved in this manner. A storage medium, such as MediLive® ImageBox, enables you to archive all images for your documentation.

### Technical data

Sensor:	Three 1/3" progressive scan CCD image sensors
Video standard:	PAL or NTSC
Analog video ports:	2x VBS 2x Y/C 1x RGB 1x Progressive (1024 (H) x 768 (V) with 60 Hz
Digital video ports:	DV, DVI
Compliance:	EN 60601-1, CSA C/US
EMC requirements:	IEC 60601-2 class B
Size:	75 x 320 x 340 mm (H x W x I)
Weight:	CCU approx. 4.5 kg Camera head approx. 0.1 kg

### Compliance

DIN EN ISO 9001  
DIN EN ISO 13485



### Carl Zeiss Surgical GmbH

73446 Oberkochen  
Germany  
Fax: +49 (0) 7364/20-4823  
Email: surgical@zeiss.de  
www.zeiss.com/dentistry  
www.zeiss.com/contacts

MediLive is a registered trademark of Carl Zeiss.