

## Stratus OCT Instrumental in Guiding Lucentis Treatment of Neovascular AMD

The emergence of anti-VEGF agents such as Ranibizumab (Genentech Lucentis™) as first line agents for the treatment of choroidal neovascularization in macular degeneration has prompted retinal specialists to ask an important question: what is the best strategy for deciding which eyes to treat and, following initial treatment, when to initiate retreatment?

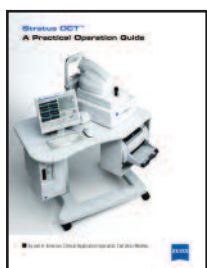
Dr. Philip Rosenfeld and colleagues at Bascom Palmer Eye Institute have suggested that most retreatment decisions can be made using two clinical data points: 1. decline in visual acuity and 2. increase in retinal thickness as detected by optical coherence tomography (OCT) in those eyes that have experienced an improvement in retinal anatomy after initial therapy.

This information is the result of a variable-dosing, open-label uncontrolled study of 40 patients conducted at Bascom Palmer Eye Institute. In this two-year study, Stratus OCT was used to determine when retreatment was necessary over two years. The visual acuity and OCT outcomes in the study were achieved with an average of 5.6 injections over 12 months versus 12 consecutive monthly injections in the original ranibizumab protocol.

“By using the Stratus OCT to follow patients, we were able to take advantage of this non-invasive, quantitative and qualitative imaging technique to give fewer injections compared with the standard monthly dosing regimen, and for a majority of the patients, obtain visual improvement comparable to the monthly dosing regimen,” said Dr. Rosenfeld.

## Complimentary Copies of the Stratus OCT Guide, Primer And Posters are Now Available

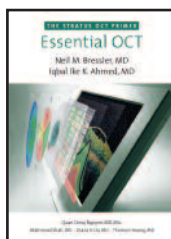
Stratus OCT owners can take advantage of a variety of training and educational aids that are now available free of charge in single copies.



**A Practical Operation Guide** — a comprehensive guide intended primarily for Stratus OCT operators. Written by ophthalmic technician and clinical application specialist Joel Emerson, this valuable resource describes scanning techniques for commonly used scans and custom scans. The Guide

also includes troubleshooting tips and proven methods of acquiring scans quickly and efficiently.

**Essential OCT, The Stratus OCT Primer** — coauthored by Neil M. Bressler, M.D. and Ike K. Ahmed, M.D. It provides brief but thorough explanations of the powerful applications provided by the Stratus OCT for both retina and glaucoma.

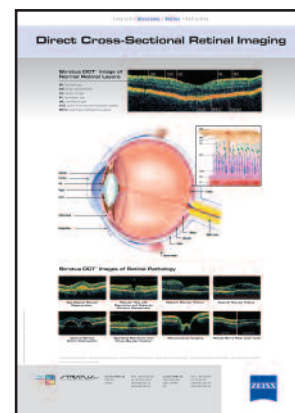


Using images and case examples, *Essential OCT* illustrates how to:

- Select and utilize scan protocols
- Ensure and assess scan quality
- Interpret Stratus OCT images
- Identify relevant analysis indices

OCT users from novice to expert will find this publication useful in applying the Stratus OCT to their clinical practice.

**Stratus OCT Wall Poster** — designed to help your patients understand the structure of the eye and appreciate the value of the Stratus OCT exam. The Stratus OCT image of a healthy retina reveals retinal layers and examples of retinal pathology demonstrating the effects of glaucoma and retinal disease. This dynamic and attractive educational tool is suitable for framing.



All three Stratus OCT training and educational aids are available by calling Carl Zeiss Meditec toll-free at 800-342-9821.