



When your patients entrust you with their eyesight, their vision and your expertise converge. For the world's most advanced surgical and diagnostic solutions in ophthalmology, you can turn to Carl Zeiss Meditec. We're committed to earning your trust anew, every day.

Technical data

Camera	ZK-5
Sensor	Sony ICX-282AQ
Size	2/3", 11mm
Image memory	32 MB
Resolution	2588 x 1956 pixels
Resolution (megapixels)	5.06
Pixel size	3.4 µm x 3.4 µm
Color depth	12 Bit
Objective lens	C mount
Color modes	RAW, RGB, YUV 4:2:2
Connection	IEEE 1394a; I/DC 1.30
Transfer rate	100, 200, 400 Mb/s
Frame rate	3.7 fps
Gain (adjustability)	Manual, 0 ... 24dB, auto gain
Shutter speeds	20 µs ... 67s; auto shutter
Smart features	Real-time shading correction; image FIFOs; programmable LUT; 2 programmable inputs and outputs; and many more
Power supply	DC 8V ... 36V via IEEE 1394a cable
Power consumption	3.6 VA
Dimensions (w/o lens; L x W x H)	44 x 44 x 65.9 mm (1.73 x 1.73 x 2.59 inches)
Weight (w/o lens)	170 g
Ambient temperature (operation)	+5 ... +45°C (41 ... 113°F)
Ambient temperature (storage)	-10 ... +60°C (-14 ... 140°F)
ZK-5	
ZK-5 video lens 2/3" C mount	
ZK-5 FireWire cable	
ZK-5 I/O cable	

ZK-5 Sensor Eye to Eye with the Future

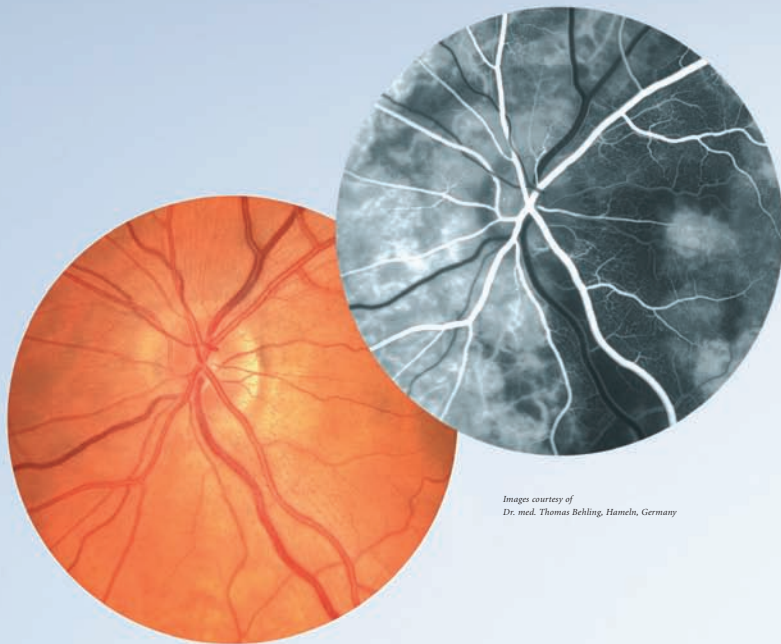


The Whole Picture

Uniquely integrated to the FF450^{plus} fundus camera from Carl Zeiss, the new ZK-5 delivers diagnostic images with outstanding quality. VISUPAC – an easy-to-use, multi-faceted software program with intuitive user guidance – provides simple, fast, economical and precise results.

Minute details - 5 million pixel resolution

With its high-resolution sensor featuring excellent focus, brilliance and accuracy, the ZK-5 is one of the most powerful color cameras in professional fundus photography. Combined with the FF450^{plus} fundus camera, it delivers optimum results for a variety of diseases such as AMD, glaucoma and diabetic retinopathy, for example. For color red-free and fluorescence angiography, the ZK-5 achieves a level of quality that was only possible with expensive two-sensor solutions.



Images courtesy of
Dr. med. Thomas Behling, Hameln, Germany

Centered around the patient

Developed specifically for ophthalmologists, VISUPAC makes your work easier. Take advantage of the easy to understand user functions and benefit from the professional data and patient management system. All data and images are assigned to your patients and are immediately available for review. The high level of security, compatibility and integration set the standards for fundus photography for the future. With VISUPAC, you are guaranteed quality and flexibility in the most advanced platform available.

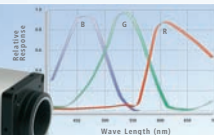
Now is the right time

The use of high-performance FireWire cameras has also become the new standard in ophthalmology. Switch now with Zeiss to this digital technology as easily and efficiently as never before. A safe investment that ensures your link to the future.

Connections



Characteristics



VISUPAC 481

