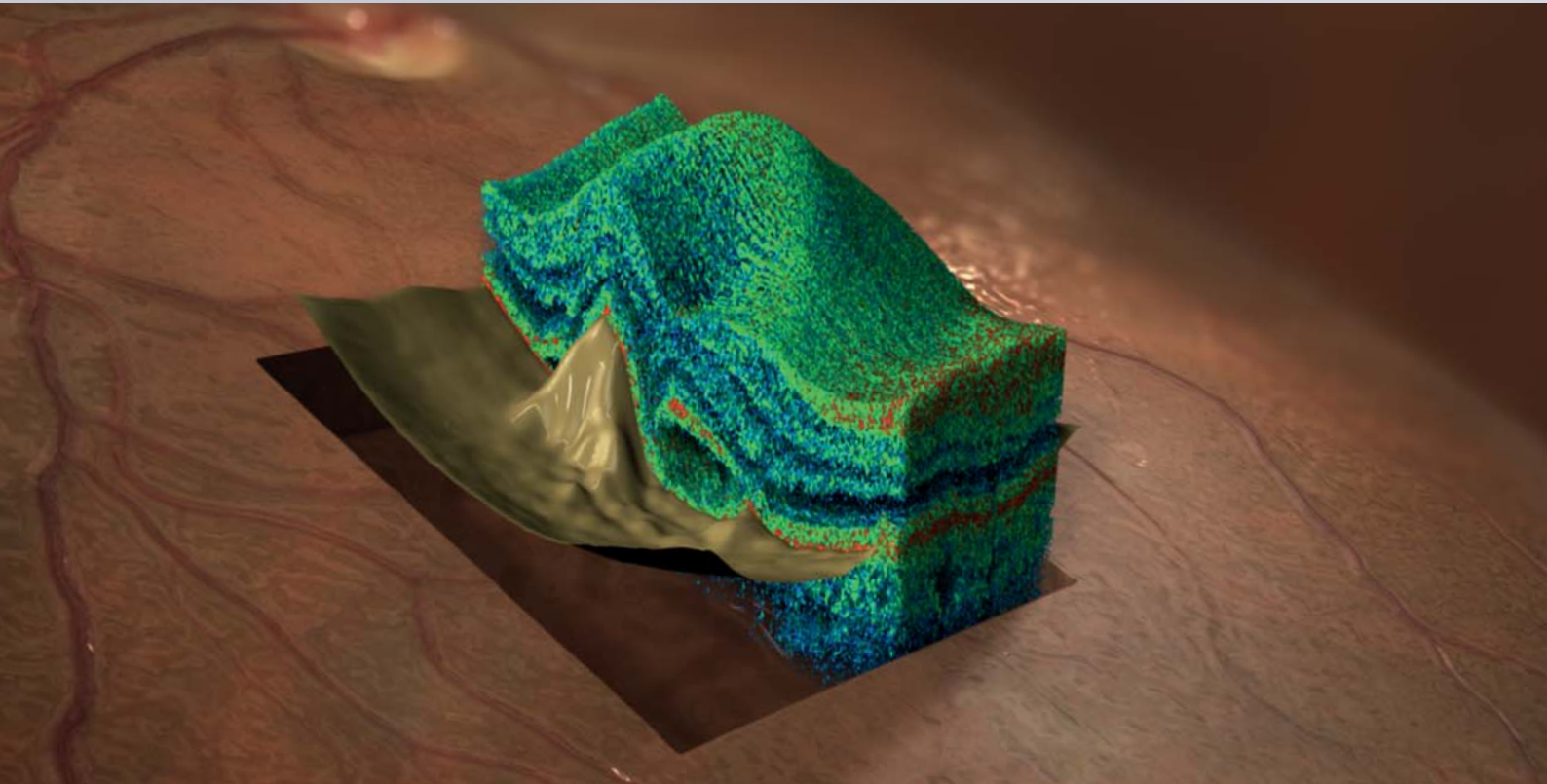


# It's not just spectral domain, it's High-Definition OCT.

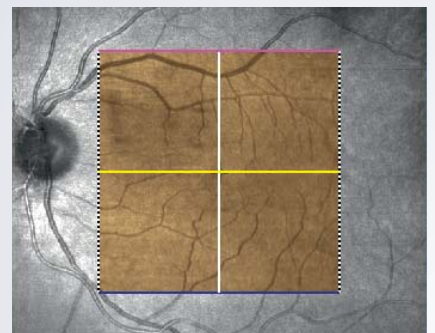
## Cirrus™ HD-OCT



## Immerse yourself in the image

Cirrus™ HD-OCT provides exquisite high definition images and optimized workflow through a host of special features:

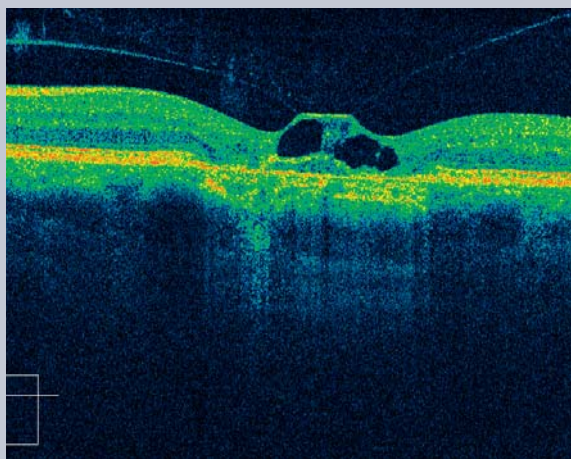
- Advanced optics facilitate examination of patients even with cataracts or pupils as small as 2.5mm
- Mouse Driven Alignment™ provides image capture and analysis in just a few clicks, minimizing patient chair time
- Fast scan time retains fine details with no image averaging
- Precise, validated segmentation algorithms result in clinically relevant images and analyses



*Real-Time Registration™ assures precise visit-to-visit registration and excellent reproducibility*

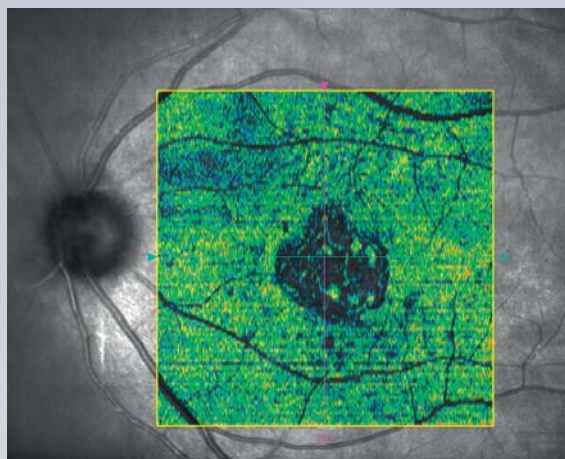


# Experience the HD difference



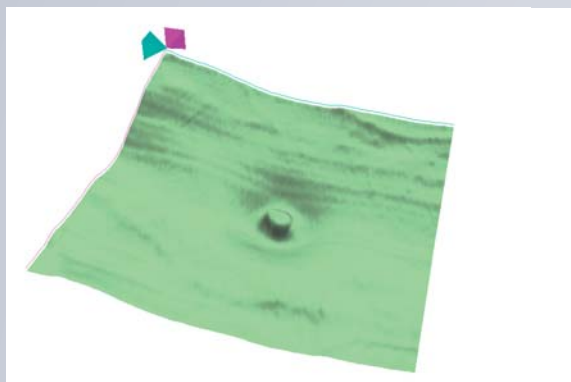
## Visualize the pathology

The HD-OCT image clearly shows disruption to two of the three innermost layers of the retina, details of the vitreomacular interface are evident with attachment of the posterior hyaloid to the fovea, and contortion of the retinal tissues.



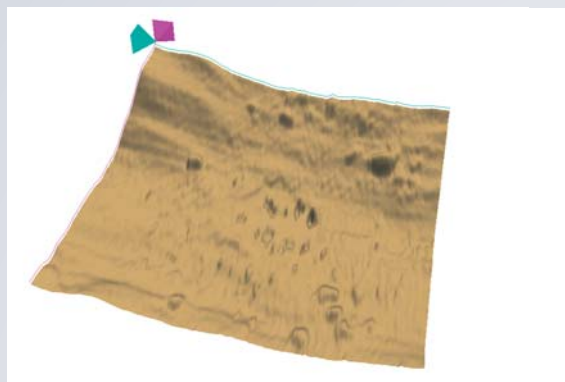
## Map the extent of outer retina distortion

The Tissue Layer overlay provides an en face view of the disruption to the photoreceptor layers and the resulting change to their reflective properties.



## Examine the ILM elevation as a result of traction

The HD ILM layer map reveals cylindrical distortion from traction on the ILM.



## Observe the retinal pigment epithelial elevation

The HD RPE layer map displays the extent of change to the RPE, revealing the precise location of anomalies.

**Carl Zeiss Meditec AG**  
Goeschwitzer Str. 51-52  
07745 Jena  
GERMANY

Phone: +49 36 41 22 03 33  
Fax: +49 36 41 22 02 82  
info@meditec.zeiss.com  
www.meditec.zeiss.com

**Carl Zeiss Meditec Inc.**  
5160 Hacienda Drive  
Dublin, CA 94568  
USA

Phone: +1 925 557 41 00  
Fax: +1 925 557 41 01  
info@meditec.zeiss.com  
www.meditec.zeiss.com

**Publication No: 000000-1526-645**  
The contents of the brochure may differ from the current status of approval of the product in your country. Please contact our regional representative for more information.  
Subject to change in design and scope of delivery and as a result of ongoing technical development. Printed on elemental chlorine-free bleached paper. PUBLICIS IV/2008.  
© 2008 by Carl Zeiss Meditec AG. All copyrights reserved.